

Eau Claire Community Agencies and Churches supporting the development of the Sojourner House.

Bethany Lutheran

Bethesda Lutheran Brethren Church

B-Side Community

Catholic Charities

Chippewa Valley Mental Health

Choose Aftercare

Eau Claire County Human Services

Eau Claire Police Department

First Lutheran Church

Inn Towne Hotel

Interfaith Hospitality Network

Knight Transitional Housing

Lutheran Social Services

Peace Lutheran Church

Sacred Heart and St. Joseph Hospitals

*Sacred Heart of Jesus - St. Patrick's
Catholic Church*

St. James the Greater Catholic Church

St. Olaf's Catholic Church

The Community Table

The Salvation Army

Trinity Lutheran Church

Valleybrook Church

United Way of Greater Chippewa Valley

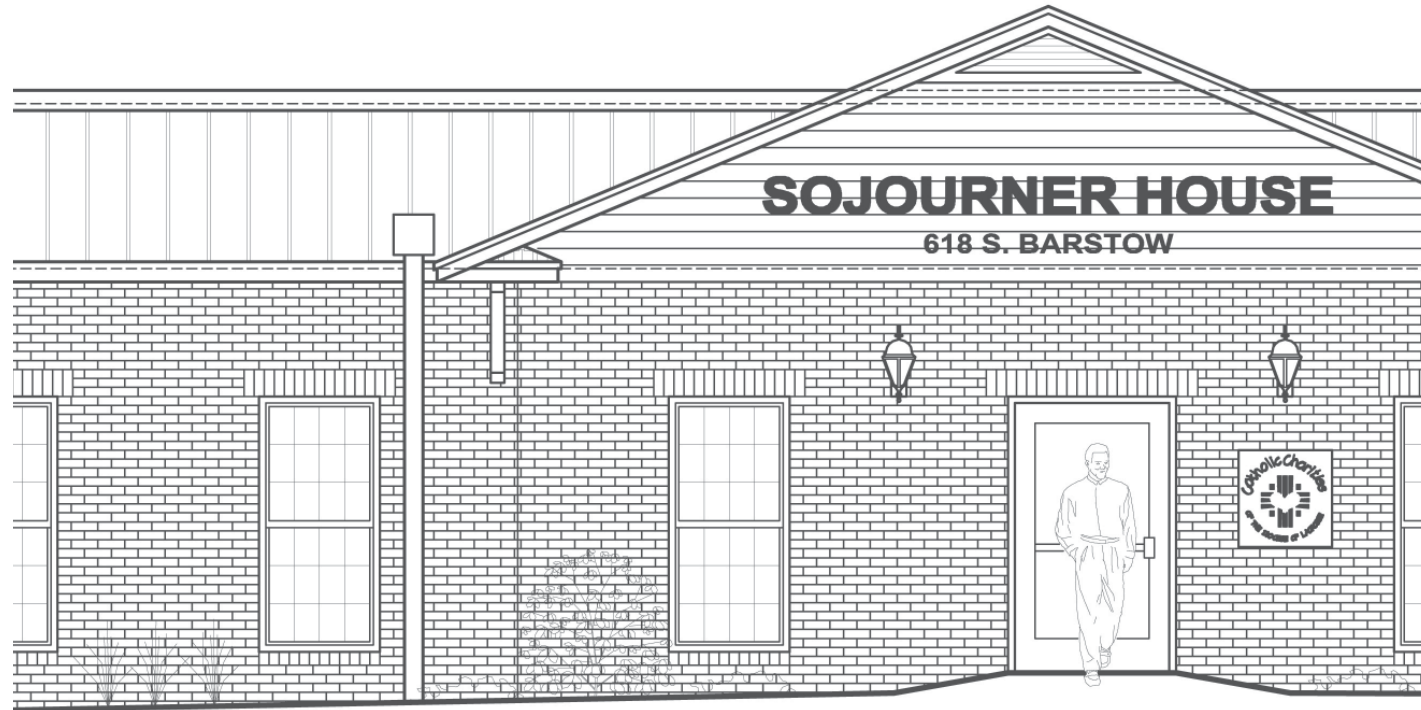
Western Dairyland Homeless Havens

To learn more about the Sojourner House or to donate online and support this endeavor - visit us on the web at www.ecsojournerhouse.com

"Friend" us on facebook!

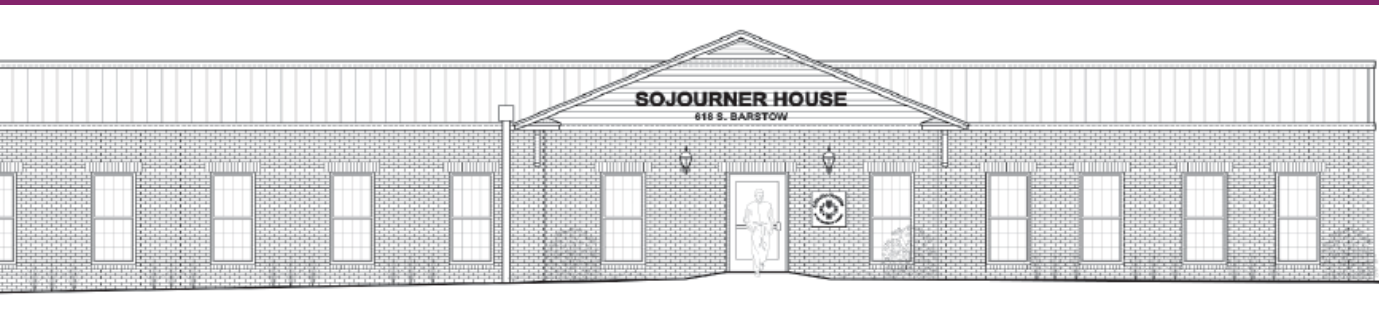
*Donations may be mailed to:
Sojourner House
c/o 448 North Dewey St.
Eau Claire, WI. 54703*

sojournerhouse
where we share the journey



*For I was hungry and you gave me food,
I was thirsty and you gave me drink, I
was a sojourner and you welcomed me."*

Matthew 25:35



*Sojourner House Mission Statement:
To provide a safe, clean place for single men and women, regardless of what their ambitions or hopes are, to sleep overnight; shower, clean their clothing, and have breakfast while ensuring our guest's personal dignity, respect, and safety.*



Sojourner House will provide:

- *Sleeping for up to 30 men and women*
 - *Separate bathrooms and showers for men and women*
 - *Guest laundry facilities*
 - *An evening snack and daily breakfast*
- *Referrals to other community resources*
 - *Help and hope with personal dignity and respect*



*Sojourner House located at:
618 South Barstow Street
Eau Claire, Wisconsin 54701*

*Donations mailed to: Sojourner House
c/o 448 North Dewey Street
Eau Claire, Wisconsin 54703*

